



Member, U.S. Olympic Committee
1 Olympic Plaza
Colorado Springs, CO 80909 USA
Phone (719) 866-4730 • FAX (719) 866-4733
WWW.USJUDO.ORG

MEMORANDUM

TO: All Concerned Parties
FROM: USA Judo Board of Directors,
Coach Development & Education Commission,
High Performance Commission,
Junior Development Commission,
Referee Commission
RE: Domestic Judogi Requirements For USA Judo National
Championship Events and Elite Point Events
DATE: April 6, 2015

2014 Judogi Rule Changes

In 2014 the IJF made some changes to the rules and specifications for materials, manufacturing, and sizing of judogis and obis. After this 4 page of this memo, you will find a multi-page IJF document titled, "GUIDANCE OF JUDOGEI CONTROL DURING IJF COMPETITIONS From 01 January 2014". It has judogi information as well as judogi control information.

2015 Judogi Rule Changes

After the "GUIDANCE OF JUDOGEI CONTROL..." document, you will find a multi-page IJF document titled, "Judogi Regulation APPLICATION 1st April 2015". This shows the proper materials and manufacturing specifications for the judogi and obi. It also shows the IJF's "APPROVED JUDOGEI" label and colors. It will show you which judogis and obis are compliant and which are not. If you are competing at international events, you will need to have judogis and obis with the IJF's "APPROVED JUDOGEI" labels. Judogi manufacturers and vendors may still have a lot of inventory/stock with the **BLUE**-bordered labels. Make sure you are purchasing the correct one for your needs and purposes. **This judogi label color change will become effective on April 1, 2015.**

An exception for **BLUE**-bordered IJF "APPROVED JUDOGEI" labeled judogis is permitted for CADET competition until September 1, 2016. **RED**-bordered IJF "APPROVED JUDOGEI" labeled judogis will become MANDATORY for CADETS on September 1, 2016.

There is an additional IJF document titled, "Guidance Of Judogi Control During IJF Competitions From 01 January 2014". This describes the judogi control procedures to determine if a judogi is compliant with the rules.

Note that it also includes information about labels, logos, names, and other details for the judogi. There is listing of IJF approved judogi manufacturers. Please remember that for all IJF/PJC competitions, the proper IJF APPROVED JUDOGEI label must be on the judogi and obi.

Compliance Broken Into Two Characteristics

So you must be concerned with 2 characteristics of the judogi and obi when competing:

1. Sizing & fit of the judogi and obi and compliance with the current rules
2. Does the judogi & obi have the correct IJF "APPROVED JUDOGEI" label or not

For Domestic Competition:

For domestic competition athletes are required to comply with characteristic #1 above - proper sizing and fit to comply with the current rules.

Among the many new material and manufacturing specifications are ones like the following:

1. The judogi eri (lapel) may have a new maximum of 4 lines of stitching. Many judogis sold in the USA have 5 lines of stitching. If the 5 lines of stitching do not make the eri unusually stiff or difficult to grip, they will be considered acceptable.
2. The acceptable judogi fabric weight ranges, have been modified. There are judogi with fabric weights that exceed the new upper limit of 750 grams per square meter. Again, if the weight/thickness of the judogi fabric does not make it unusually stiff or difficult to grip, they will be considered acceptable.

The judogi and obi does NOT have to be made by an IJF approved manufacturer with the IJF's "APPROVED JUDOGEI" label on the judogi or obi.

For International Competition (regardless of location):

All athletes will be expected to comply with both characteristic #1 - proper sizing and fit and #2 - IJF approved judogi with IJF label.

1. **BLUE**-bordered IJF "APPROVED JUDOGEI" labeled judogis will be acceptable until March 31, 2015. On April 1, 2015, **RED**-bordered IJF "APPROVED JUDOGEI" labeled judogis will become MANDATORY.

For International Competition (regardless of location) (con't):

2. **RED** -bordered IJF "APPROVED JUDO GI" labeled judogis will become MANDATORY on April 1, 2015.
3. Obi with **BLUE** or **RED**-bordered IJF "APPROVED JUDO GI" labels will be acceptable.
4. Non-black belt athletes are NOT required to have a white or color belt with the IJF's "APPROVED JUDO GI" label on them. This is the only exception.
5. An exception for **BLUE**-bordered IJF "APPROVED JUDO GI" labeled judogis is permitted for CADET competition until September 1, 2016. On September 1, 2016, **RED**-bordered IJF "APPROVED JUDO GI" labeled judogis will become MANDATORY for CADETS too.
6. These requirements for IJF "APPROVED JUDO GI" judogis and obis is required for all IJF/PJC events for Cadet level and higher competition. These requirements should be presumed to be mandatory for all international competition for Cadet level and higher.

For example: At this summer's Junior Olympics in June, the competition on Sunday is an IJF/PJC World Circuit Event for Cadets & Juniors. Thus, all Cadet and Junior athletes must wear judogis and obis that are completely IJF compliant (both characteristics #1 & #2). Be sure that your athletes have the acceptable color IJF "APPROVED JUDO GI" labels.

Athletes Reporting With Non-Compliant Judogi & Obi At Mandatory Domestic Compliance Events:

1. If an athlete reports with a judogi and/or obi that does not comply with characteristic #1 (sizing & fit), they will be asked to change their judogi/obi.
2. If an athlete reports with a judogi and/or obi that complies with characteristic #1 (sizing & fit), but does not have the IJF's "APPROVED JUDO GI" label on it and the examining referee determines that something may be amiss about the judogi (e.g. material feels slick, lapels are too stiff, material is too thick and is hard to grip, and etc.) the athlete may be asked to change their judogi.
3. In both cases, the athlete will have one (1) opportunity and a maximum of 3 minutes to obtain a replacement judogi and report again for the match. If they miss the 3-minute time limit or if the replacement is not compliant, then the athlete will be disqualified from that match.

Mandatory Domestic Compliance Events:

The requirements discussed in this memo are required for all four (4) USA Judo National Championships Events. This includes:

Mandatory Domestic Compliance Events (con't):

1. Scholastic National Championships
2. Senior National Championships
3. Junior Olympic Championships
4. National President's Cup Championships

Matside Referees Will Monitor Judogis & Obis:

As we generally do not use a chute system to enter the field of play, matside referees will monitor judogis and obis.

Recommendation For All Other Events:

Additionally, we strongly recommend that all tournaments utilize the current judogi specifications.

If you have any questions, concerns, or suggestions, please do not hesitate to contact us. Thank you very much.

GUIDANCE OF JUDOGI CONTROL DURING IJF COMPETITIONS

From 01 january 2014



IJF JUDO GI SUPPLIERS UPDATED ON 01/01/2014

Master Supplier



Green Hill

Official Supplier



Supplier



Adidas Double D



Budo Sport (HIKU)



DANRHO Sport Rhode GmbH



Essimo



Fighting Film



Kappa



Kusakura



Matsuru



Mizuno

The judogi control is placed under the responsibility of the IJF Education Commission.

SPARE JUDO GI SUPPLY:

During the competitions organized by IJF, the organizers will supply blue and white judogi of different sizes. The belts of different sizes must also be supplied. Judogi will be available in the “call room” so that any change requirement could be met as quickly as possible. A closed structure for any change request must be located in the control zone.

The replacement judogi must be used only in the following cases::

- Torn judogi during a fight
- bloodstains or any other apparent stains
- irregular size
- irregular or missing backnumber
- inappropriate advertising
- inappropriate emblem
- unofficial brand
- jacket and trousers, if not the same brand
- inappropriate color
- worn out judogi...

The judogi are supplied by the organizers for a fight. The competitor must leave his accreditation card or part/parts of the judogi which does not meet the requirements of the IJF regulations, to the organizers in exchange of the irregular element(s). The spare judogi must be returned back immediately by the end of the fight.

Each athlete is obliged to go through the judogi control before his fight. A specific zone is dedicated for that purpose.

If a competitor refuses to comply with the rules, he/she will exclude himself/herself from the competition.

Note : The spare judogi are supplied for the competitors as a “service”. The organizers cannot be blamed if a competitor cannot find a judogi with a suitable size, whatsoever.

PRESENTATION

The judoka has to show up in the regular dress he would have to appear on the tatami. The EC has decided to cancel the disqualification for a judogi which does not conform to the rules and has replaced it with a coach penalty. If an athlete does not respect the judogi rules, the coach who is responsible for the athlete would be suspended for the rest of the competition of the day. In the case of a repeated offence the coach would then be suspended for the rest of the competition.

JUDOGI CONTROL PROCEDURE:

1. The judogi must not be wet, and show any particular stains.
2. The jacket and the trousers need to be of the same brand and of a uniform color.
3. The name of the fighter on the accreditation card has to correspond to the backnumber.
4. The "IJF Approved" label on the jacket, the trousers and the belt is controlled with a UV optical lamp.
5. The logo of the judogi manufacturer approved as "IJF Official supplier" must appear on the jacket, the trousers and the belt. The brand of the Judogi manufacturer must be identical for the jacket and the trousers.
6. The appropriate backnumber, entirely sewed, with the name of the competitor (corresponding to the accreditation card) and the dedicated advertising of the competition (which can be different for the white and blue Judogi according to the competition protocol).
7. National emblem (on the left side of the jacket at the chest level).
8. Control of the corresponding advertising.
9. Control of jackets, trousers (the malleolus must be visible and accessible for checking the length of the trousers) and belt size in compliance with the current regulations
10. Control of any Protections (knee pad, elbow pad, shin pad...). No metallic part or any other part made of rigid material is allowed. The control of the size of the judogi is operated with the worn protections.
11. Long hair must be tied.



WEARING-OUT OR BLOODSTAIN:

-A fighter's judogi must not show any worn out signs, particularly on the collar and the lapel. If the condition of the judogi is assessed as unsatisfactory, the fighter must wear a spare judogi.

- In case of a bloodstain on the judogi, the fighter must wear a spare judogi.

MARKING MATERIAL (LOGO, EMBLEM, ADVERTISING...):

Markings have to be made with material which doesn't prevent good judo practice.

Note : In case a fighter wears a color belt (brown, blue or green), this one must be made of soft material. Exemption of the IJF label

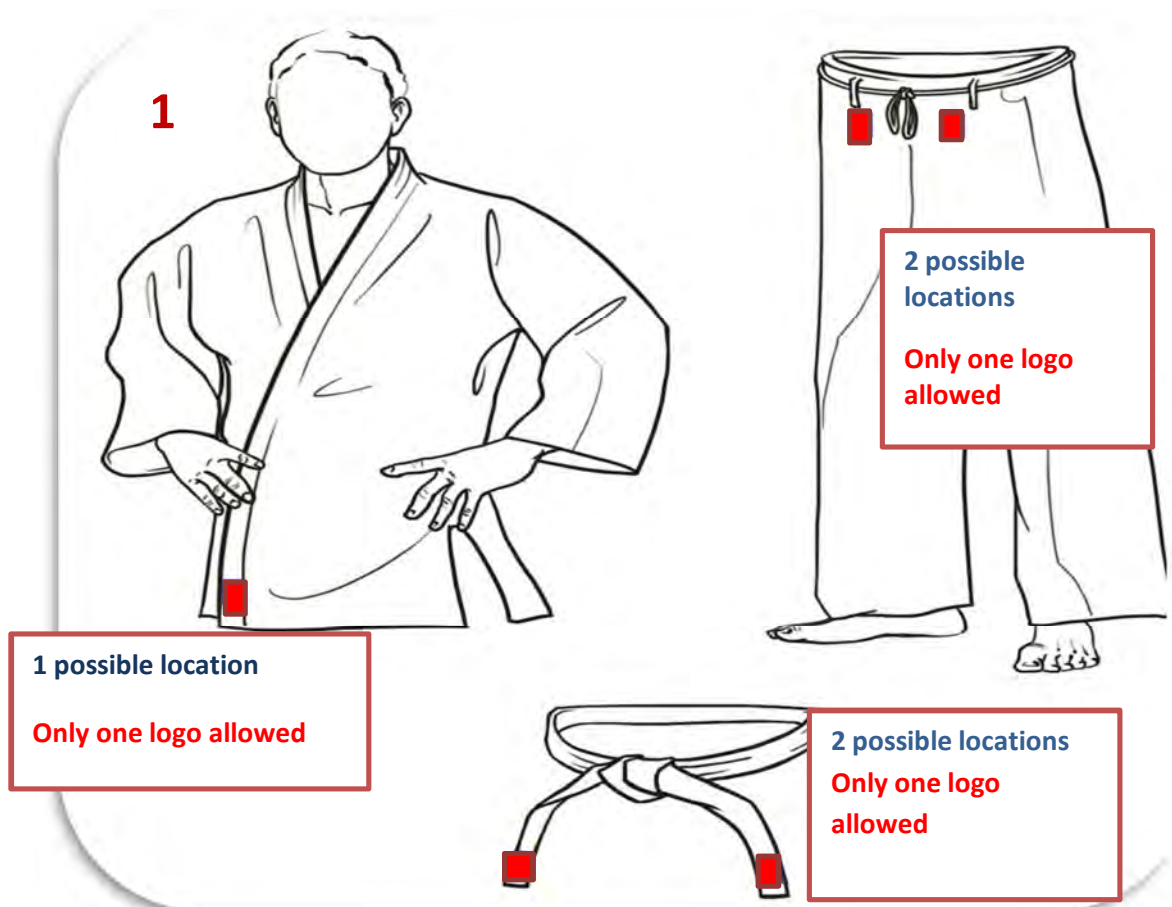
No element (sticky, sewed...) masking an element of judogi or belt is allowed.

IJF LABEL (SEE PICTURE 1):

Identification corresponding to IJF current rules. Unforgeable optical label certifying that the judogi complies with the IJF current rules.

The label is fixed:

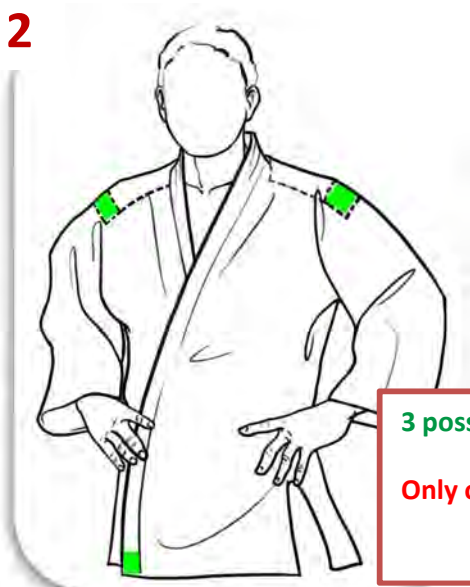
- On the front side and the bottom of the jacket, on the left side (jacket is folded on the right side), near or in the reinforced zone.
- On the front side and the top of the trousers, close to the middle.
- at one of the two edges of the belt*



LOCATION OF THE MANUFACTURER'S LOGO (SEE PICTURE 2):

Only one manufacturer's logo per clothing item is allowed (jacket, trousers, and belt)
It must be in an area of maximum 20 cm² and should be fixed:

2



3 possible locations

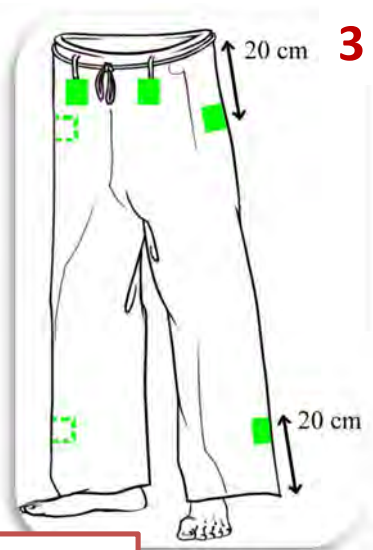
Only one logo allowed

On the jacket in a visible area:

- Either on the bottom, on the left side (when jacket crossed on the right side), near or in the reinforced zone. See picture 2.
- Or at the bottom edge and inside the publicity zone permitted on the shoulders (25cmx5cm). See picture 2.

On the trousers, in a visible area
(see picture 3):

- Either at the top, at the front side or outside (Maximum 20cm from the waist string)
- Or at the bottom, on one of the two trousers at the front side or outside (maximum 20 cm from the bottom of the lower edge of the trousers)



3

6 possible locations

Only one logo allowed

4



On the belt, in a visible area, (see picture 4):

- at one of the two edges.

2 possible locations

Only one logo allowed

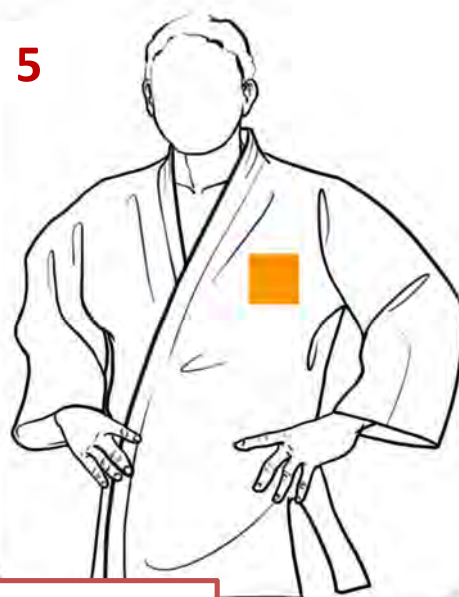
NATIONAL EMBLEM (SEE PICTURE 5):

Official identification of a nation, a National Olympic Committee or an IJF affiliated national federation.

No commercial brand can be associated to it. It is fixed on the left side, at the chest level. Maximum surface 100 cm²

It can also appear in the publicity space. (See picture 6)

5

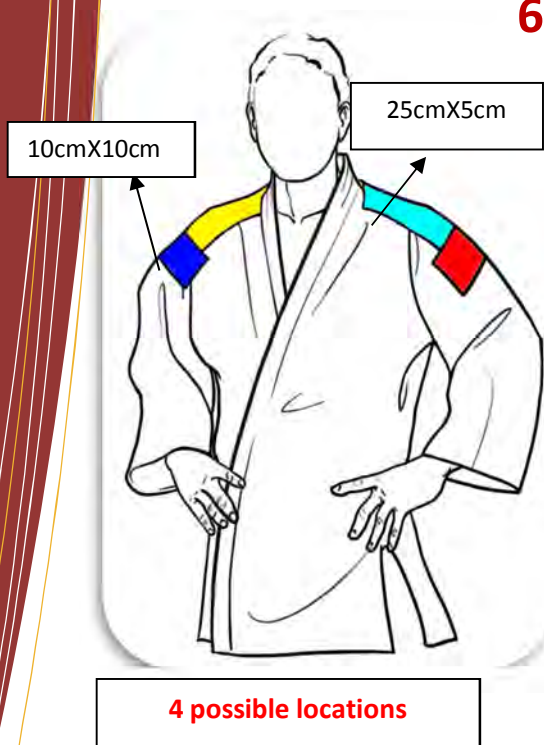


1 possible location

Only 1 emblem allowed

ADVERTISING (SEE PICTURE 6):

6



4 possible locations

Advertising is allowed only on the jacket. It must respect the practical provisions of IJF. The advertising cannot mention political, denominational or sport organizations other than the IJF, the Continental Unions, member National Federations, their organizations and affiliated clubs. It is not permitted to make the promotion of tobacco, alcohol, any prohibited substances during the fight listed in the doping code, of any product, property or service contrary to the morals and to the good customs.

On the visible part of the jacket the advertising can appear in 4 advertising spaces:

- on the sleeves, inside the surface of maximum 10x10 cm, situated at 25 cm from the lower part of the collar.
- on the shoulders, a stripe of 25cm x 5cm. The stripe must be calculated from the lower part of the collar down the sleeve.

A Maximum of 4 different publicities are permitted.

Only one publicity is allowed per space.

ADDITIONAL ADVERTISING RESERVED FOR THE ATHLETE

The International Judo Federation wished that the athletes could provide their economic partners an advertising space allowing them to make their own promotion.

An advertising reserved for the athlete is allowed only on the judogi jacket, on the right side. This one must appear in a rectangle of 10cm X 5cm. It cannot be competing of the judogi brand and of the advertising reserved to the Federation (except agreement of this one). It is not permitted to make the promotion of tobacco, alcohol, any substances within the fight listed in the doping code, of any product, property or service contrary to the morals and to the good customs.



MARKING (SEE PICTURE 7):

The name of the fighter is permitted:

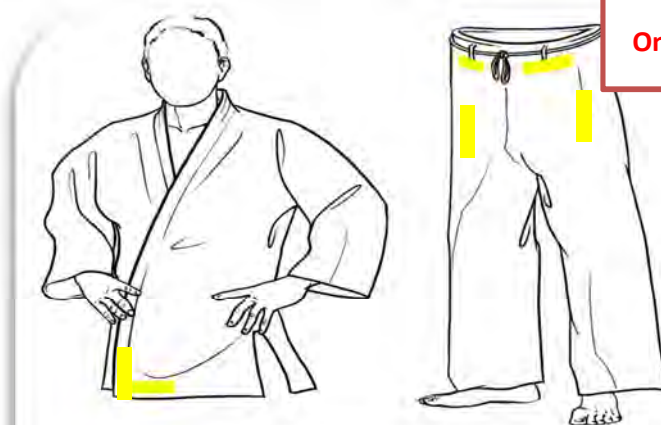
- On the bottom of the jacket
- On the top of the trousers
- On one of both extremities of the belt

The letters composing the name of the fighter should not exceed a height of 4 cm and a length of 20cm. No other marking will be accepted.

7

2 possible locations

Only 1 text allowed



4 possible locations

Only 1 text allowed

2 possible locations

Only 1 text allowed

BACK NUMBER (SEE PICTURE 8):

8

It is fixed on the back of the jacket, sewed in a solid and regular way. The top of the backnumber must be placed at 3 cm from the collar. During the competitions organized by IJF, it must include the publicity of the competition (which is different for white and blue judogi).



COLOR:

The jacket and the trousers should be of a uniform color and correspond to the following color references::

- White: Snow white reference
- Blue: maximum Pantone color: 285M 5M minimum Pantone color: 286M

JUDOGI SIZE (SEE PICTURE 9):

Judogi and belt are controlled by SOKUTEIKI

9



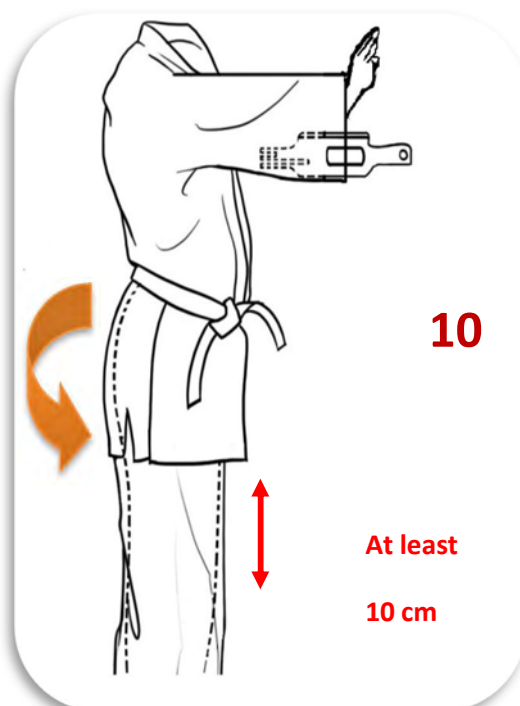
JACKET (SEE PICTURE 10):

-The jacket has to cover completely the Buttocks. It has to be 10 cm at least from the knee.

-At the sleeves level (During the control the straight and fists closed):

-the SOKUTEIKI must slip inside entirely and smoothly.

- Judogi sleeves must cover up the full arm in judogi jacket (open arms).



PICTURE 11

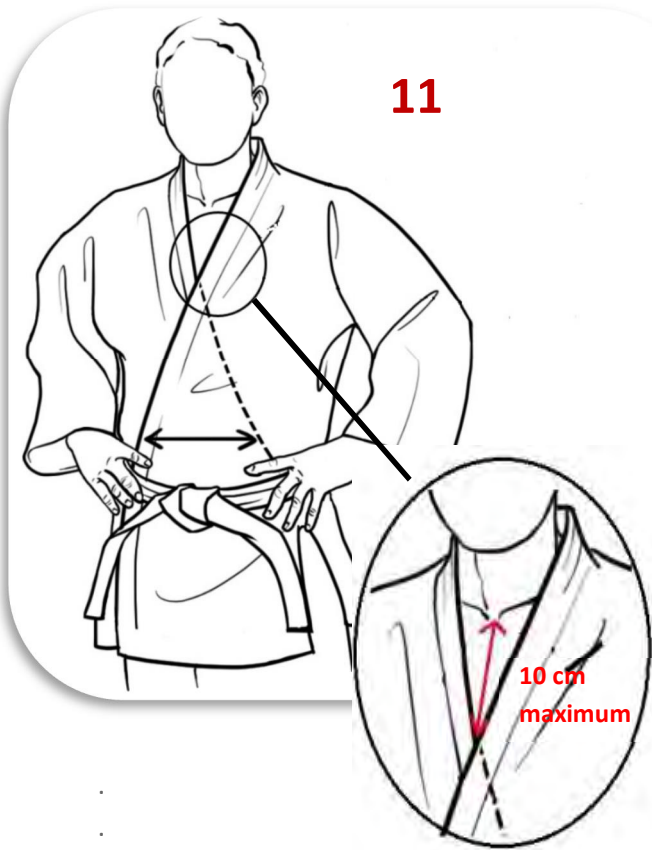
Crossing points of the jacket must be at more than 20 cm

- The distance between the 2 lapels of the jacket horizontally, needs to be of a minimum of 20 cm.

-The thickness of the lapel side must be less or equal to 1cm.

- the width of the lapel side must be 4 cm.

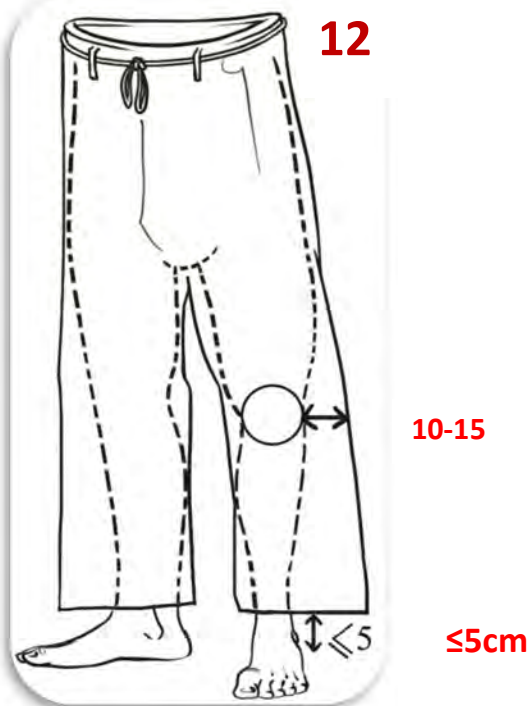
- The distance between the sternum top and the lapel crossing point of the jacket vertically must be less than 10cm



TROUSERS (SEE PICTURE 12):

-the distance between the bottom of the trousers and the exterior malleolus (ankle) must be less or equal to 5 cm.

- the width must be between 10 and 15 cm at the knee level



BELT (SEE PICTURE 13):

- the thickness must be between 4 and 5 mm
- the tips starting from the central knot must have a length between 20 and 30 cm.
- the knot must be correctly and tightly made
- The belt must not be made of a stiff and/or slipping material



TEE-SHIRT (FOR WOMEN)

- of white color, short-sleeved, round-necked.
- marking of the manufacturer logo, of maximum 20 cm² is authorized. It cannot be visible while the judogi is done.
- the national emblem representing the official identification of a nation, a National Olympic Committee or national federation member of IJF can be fixed on the chest, on the left side.
- no commercial marking can appear.

Judogi Regulation

APPLICATION
1st April 2015





IJF CONTACT

Jean-Luc ROUGE
IJF General Secretary

+33 1 40 52 16 35

gs@ijf.org

21-25 Avenue de la Porte de Châtillon
F-75 680 Paris Cedex 14 France

IJF APPROVED LABORATORIES

CRITT Sport Loisirs

Contact : M. Antoine BEAUFILS

Adress : ZA du Sanital, 21 rue Albert Einstein
86100 Châtellerault France
Phone: + 33 5 49 85 73 43
Fax: +33 5 49 21 76 20
Email : recherche@critt-sl.com

JAPAN TEXTILE PRODUCTS QUALITY AND TECHNOLOGY CENTER

Contact: Mme. Yoko OYA

Address: 7-19 Tomizawa-cho, Nihonbashi
Chuo-ku, Tokyo 103-0006 Japan
Phone : +81-3-3666-5384
Phone: +81-3-3666-5390
Fax : +81-3-3666-5394
Email : tk-g8@qtec.or.jp; shimizu@qtec.or.jp



FIG 1 EXAMPLE OF THE OFFICIAL STICK FOR JUDO-GI AND BELT

- ON JACKET
- ON TROUSERS
- ON BELT

1. IJF OFFICIAL JUDO GI

International Judo Federation has established a system of technical approval for Judogi and belt which must be used during IJF official events.

Judogi must have Tag with its Official Label with an optical code provided by IJF which cannot be falsified..

All Judogi for IJF official events must conform to these requirements from **01 April 2015** and must be obligatory with the IJF official Tag (red borders) or else it won't be allowed in competition. Before this date judogis with the former label (blue borders) will be accepted if the measures correspond to the size requested in rules January 01, 2014. Failing that, Judogi will not be accepted in competition. Belts must be with blue or red IJF official Tag.

Only equipment in conformity with IJF rules can be approved



CONDITIONS

Only companies who have signed "IJF official supplier agreement" and who have got a certificate of conformity for their product from one of the IJF approved laboratories (see list in appendix) can obtain the Tag with its Official and unforgeable Label. To become an IJF official supplier, a company must contact IJF General Secretary office for the registration procedure.

gs@ijf.org

CERTIFICATION

If a company approved as an official supplier needs to obtain the Official Label provided by IJF, the manufacturer of the company must produce Judogi and belt in accordance with the rules to one of the official IJF testing laboratories for inspection and approval:



- One white Judogi (jacket and trousers), size 180
- One blue Judogi (jacket and trousers), size 180
- Two samples of the jacket's fabric, part above the belt (grain stitches):
Color: white and blue
Dimensions: length 1,5m, width – width of the roll of the fabric
- Two black belts (Length of the belt to be sent should be between 2,5m and 3m)



REFERENCE

The name or/and the reference number shall be distinctly visible on the jacket, trousers and belt.



CONTROL

All products during an IJF event which are controlled non-compliant will be the object of an investigation. If the supplier is recognized incorrect, a penalty going up to the withdrawal of the IJF agreement can be pronounced by the Office of the IJF. If it is the competitor or his team who are recognized incorrect, they will be sanctioned by the IJF office.

2. GUIDELINE FOR JUDOGI MANUFACTURERS

The Judogi quality is essential so that the opponent executes his technique, it is compulsory that every judogi is of property identical

2a Fabric material

2a(1) The fabric for Judogi must not be too thick, too rigid and too slippery for the opponent to take a grip.

2a(2) The fabric of Judogi must be cotton or cotton blend with more than 70% Cotton, and must have good hand-feeling. Blending components other than cotton (less than 30%) can be chemical fibers, such as Rayon, Nylon, Polyester, etc.

Note : *The use of chemical fiber will increase the strength and reduce the weight of the fabric. On the other hand, too much use of chemical fibers makes the fabric less sweat-absorbing.*

2a(3) The fabric must have an appropriate solidity. Therefore, weaker fabric must not be used intentionally.

2a(4) The fabric weight (after new and unused jacket is washed and dried) must be between 650g/m² and 750g/m².

2a(5) Judogi white must have the color of cotton, that is, natural white or off-white.

2a(6) The official standard color for Judogi blue must be between Pantone number n°18-4051TCX(TPX) and n°18-4039TCX(TPX) on the textile Pantone scale and between n°285M and n°286M on the print Pantone scale.

2b) Fabric weave system

2b(1) The jacket of Judogi is composed of two parts, upper jacket part (approximately above the belt position) and lower jacket part (approximately below the belt position). Upper jacket part must be Sashiko-weave fabric. (Sashiko is like grain stitches.)

The lower jacket part must be light-weight and strong plain-weave or twill-weave fabric, which is combined with diamond patterned Sashiko weave.

(See the illustrations, Fig. 11, Fig.12, Fig.13)

Note 1: *Lower jacket (lower side) part needs lightness rather than strength, therefore, diamond -patterned fabric is generally used. (More yarns, heavier is the weight.)*

Note 2 : *Fabric face must be on the right face of Judogi, and reverse use is not allowed.*

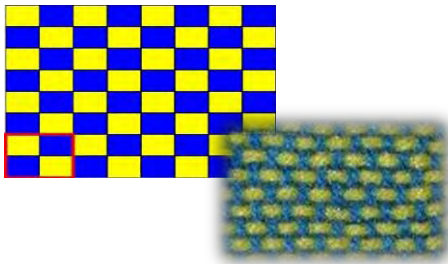




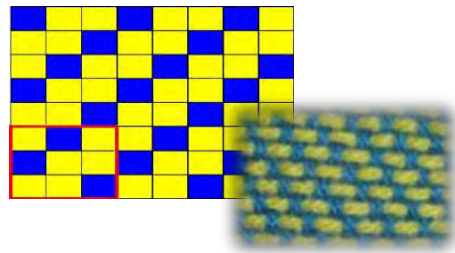
Float

Textile

PLAIN WEAVE –FIG 2-



TWILL WEAVE –FIG 3-



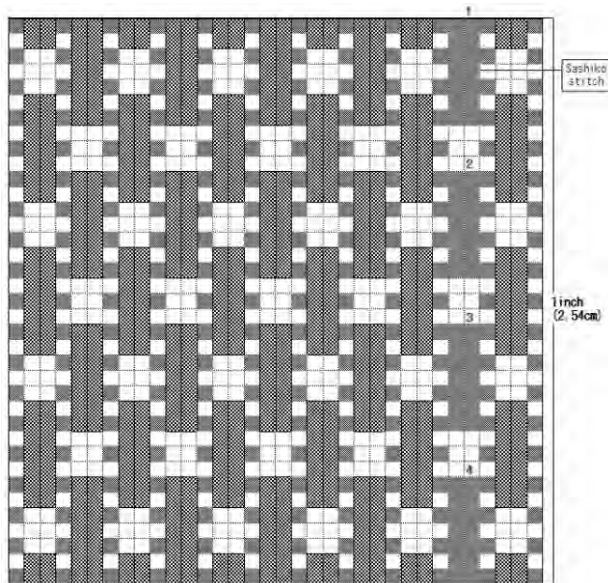
The red square is just showing the repetitive weave system.

2b(2) Sashiko yarn direction must be horizontal when Judogi is placed vertically (when in use). Note : Horizontal Sashiko yarns increase the fabric strength against horizontal tensile force. When the direction is vertical, the fabric becomes slippery causing difficulty of handgrip.

2b(3) Upper jacket part must be double-woven Sashiko fabric having enough strength to resist a 2200N traction.

2b(4) Number of float of Sashiko yarn must be 3 to 5 per inch (inch = 2,54 cm) after washed and dried.

SASHIKO –FIG 4-



2b(5) New and unused product after washed and dried must be within the range bellow:

Sashiko yarn and basic fabric weave (inch = 2,54 cm)

Yarns per inch (2.54 cm) for warp and weft (after washed and dried)

Sashiko Yarn (warp)
±5% Tolerated

Yarn count	Per inch
10–5 ply	18 to 25
20–12 ply	18 to 25
10–6 ply	18 to 25
20–10 ply	18 to 25

Ground warp Yarn
±5% Tolerated

Yarn count	Per inch
10–one ply	70 to 96
10–2 ply	34 to 48
20–2 ply	70 to 96

Welt yarn
±5% Tolerated

Yarn count	Per inch
20–3 ply	70 to 88
10–2 ply	56 to 80
10–4 ply	28 to 40

-FIG 5-



HOW TO CHECK THE NUMBER OF WARPS AND WEFTS?

1. Prepare a loupe for textile use by which yarns in 1 square inch can be observed. (left picture)
2. Count the number of warps per inch for the surface fabric.
3. Count the wefts after removing warp yarns and Sashiko yarns from the fabric.

2b(6) The fabric for trousers and jacket collar must be twill weave.

2c) Sewing specifications

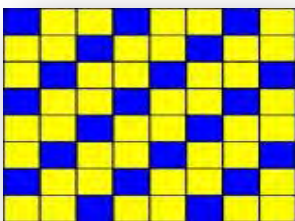
2c(1) Jacket

- Sashiko covering dimension must be in the range of 50 - 55% of the finished whole jacket length. Judogi for over 190 cm height, the range can be 45 - 55%.
- Sashiko part must not have sewing stitches other than at back joint, both side body, and both sleeves, except upper-lower joint. (See Fig.12, part D)
- Width of collar must be 4 cm maximum. Collar must be sewn with 4-rows. (Fig.8)
- The color of inside-collar fabric must not be seen from outside.
- The collar thickness must be up to 1 cm except the part including sewn seam in case that sewn seam is placed in the jacket back and extended to the collar.
- Collar assembly which sandwiches body Sashiko fabric and chest pad fabric must be in accordance with the following points (2c(1)a, 2c(1)b, 2c(1)c, 2c(1)d).

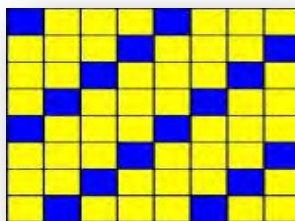
2c(1)a Outer part of collar (essential part)

- Twill weave cotton or cotton blend with more than 70% cotton fabric must be used (chosen from the three types):

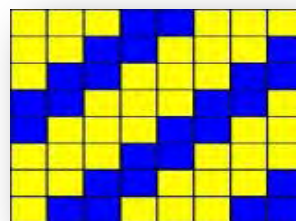
-FIG 6- TWILL WEAVE 2.1



TWILL WEAVE 3.1



TWILL WEAVE 3.2

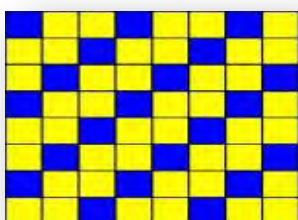


Yarn must be thinner than yarn count 10s. (2-ply yarn having equal resulting count can be used to increase strength.)

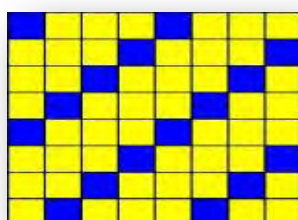
2c(1)b Reinforcement fabric for the collar (if used)

In the case of using reinforcement fabric for collar, cotton fabric with plain or twill weave.

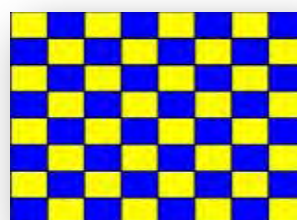
-FIG 7- TWILL WEAVE 2.1



TWILL WEAVE 3.1



TWILL WEAVE 1.1



Yarn must be thinner than yarn count 10s.

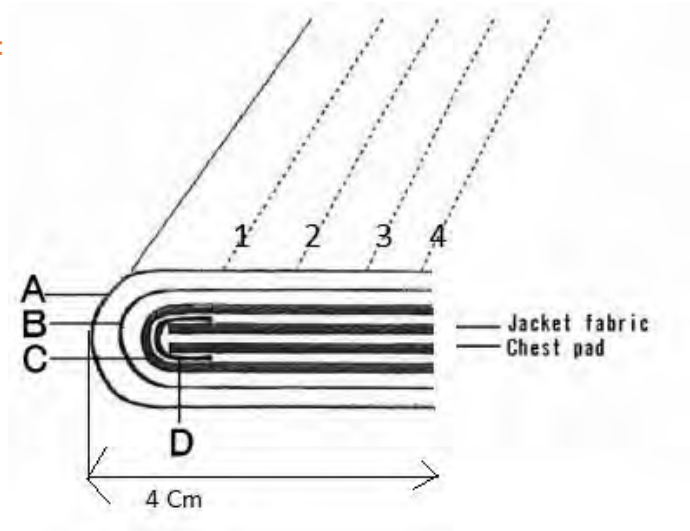
2c(1)c Main core material (essential part)

Main core material for collar must be one of the 4 materials, throstle spun yarn fabric (Garabo), non-woven fabric, felt, or diamond -patterned fabric.

2c(1)d Sub core material (if used)

In the case of using sub core material, use a material as specified in 2c(1)c.

FIG. 8 THE COLLAR:



Note: The purpose of specification above is to prevent collar from becoming too hard to grip by setting the upper limit on the collar thickness.



HOW TO CHECK THE HARDNESS OF THE COLLAR (AFTER WASHED AND DRIED)

1 Fold the collar, at the chest pad inserted part, into two and place

Note: At this time, do not touch around the folding axis to avoid any pressing force.

2. The height (width) of collar folded into two must be within 3,5cm.

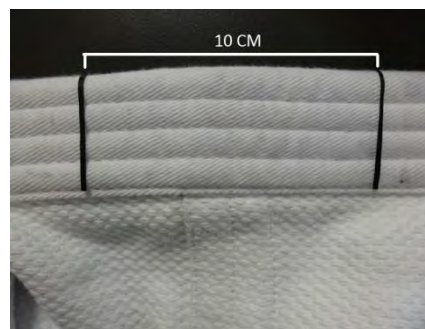


FIG. 9 A

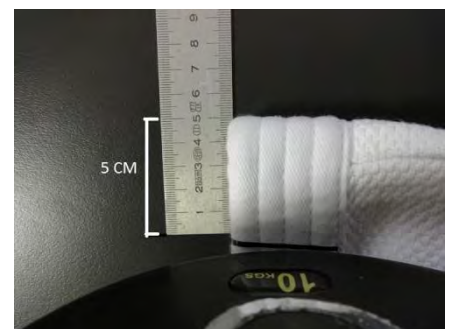


FIG. 9 B



FIG. 10





- A cuff on a sleeve (turn-back of sleeve edge) must be within 3 cm wide except raised part.(Fig. 11, part C)
- Lower side of both sleeves must be sewn by rolled seam. (Fig. 11, part G)
- Reinforcement tape for jacket sleeve edge, trouser leg edge, and seaming part of upper and lower panel of jacket and some other parts must be thin cotton plain or twill weave, within 3cm wide, and use up to 3-row stitching.
- In the case of back-center seaming, the seam width must be within 3 cm. (Fig. 12, part B). Any reinforcement fabric cannot be used for the back seaming.
- Overlock stitch for fabric raw edge is allowed to prevent fray.
- Use of reinforcement pad on the back side is allowed for 3 places: shoulder, chest and armpit (only one fabric thickness for each place).

2c(1)d(1) Shoulder pad

Up to 5-row machine-stitching must be used. The vertical length of the pad must be within about 1/3 of upper back body length in front and back. The pad material must be the same Sashiko fabric as jacket fabric. (Fig. 12, part C)

2c(1)d(2) Chest pad

- Chest pad must be half oval-shaped and be attached from the base of the shoulder pad along the collar using up to 5-row stitch.
The width of the chest pad must be approximately 1/4 of the jacket back-body width. (Measurement based on back-hip joint width).
Excessively wide pad is not allowed. (Fig.11, part D) Pad material must be the same fabric as jacket fabric. Overlapping of shoulder pad and chest pad must be within 5cm inside the jacket.

2c(1)d(3) Armpit pad

Armpit pad must be oval-shaped and be attached using 5-row to 8-row stitch. Pad material must be the same fabric as jacket fabric, plain weave, or twill weave. (Fig. 11, part E)

- Both side slit-ends are to be sewn with covering fabric.
The length of side slit must be 1/3 to 1/2 of the lower jacket part length (Fig. 13).
A reinforcement fabric for above slit-ends is allowed within the size of 100 cm².

Note: Both side slits of jacket make Judo movement easier. (Only one slit in the center-back is not allowed.)

If slit is longer than 1/2 of the lower jacket part length, it will cause dishevelment.

FIG. 11 (FRONT BODY OF JUDOGI JACKET)

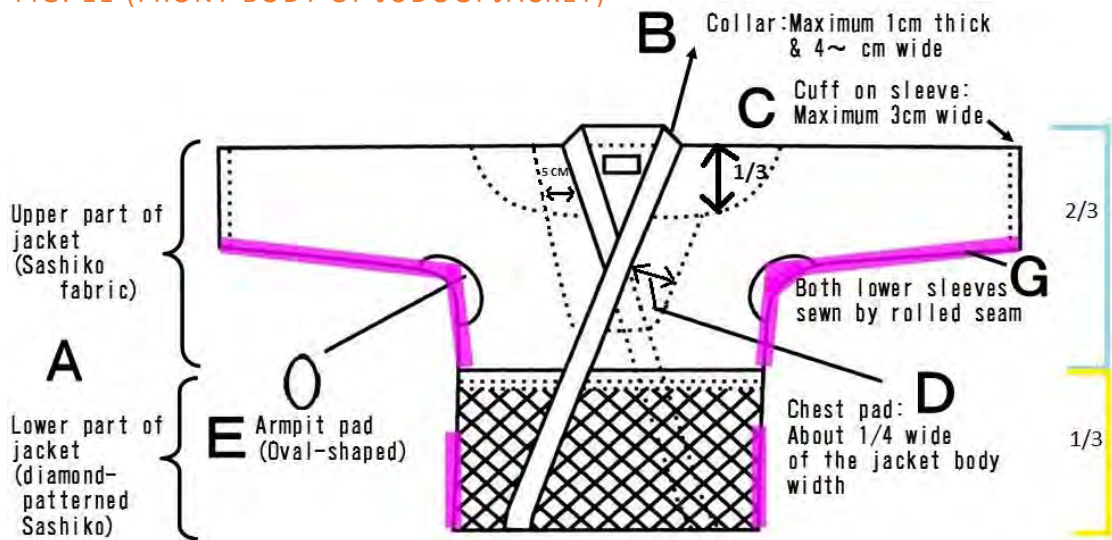


FIG. 12 (BACK BODY OF JUDOGI JACKET))

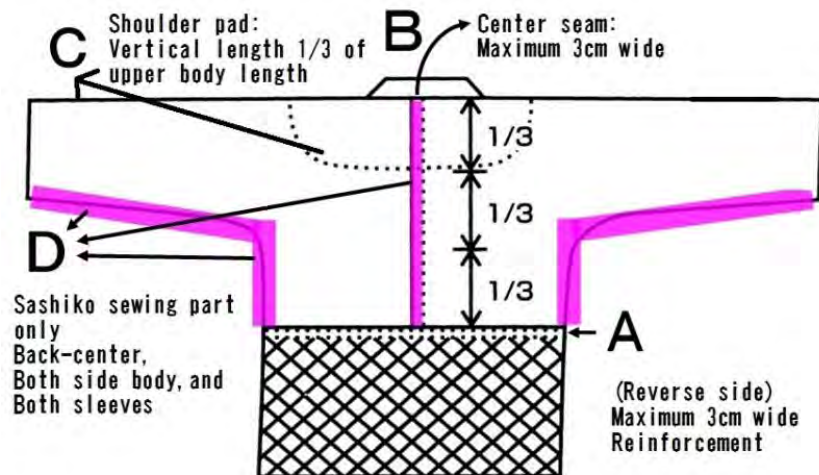
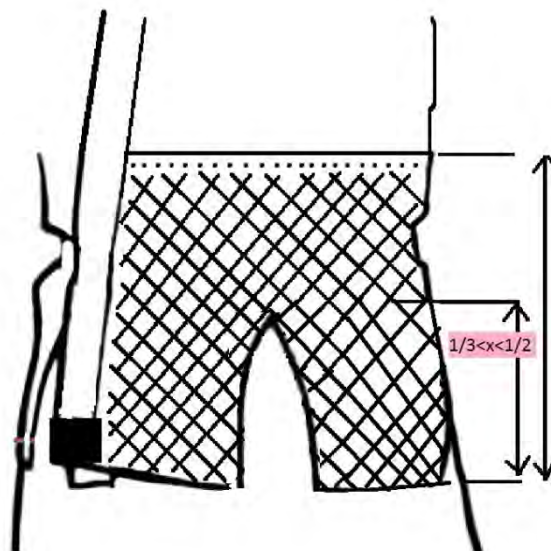


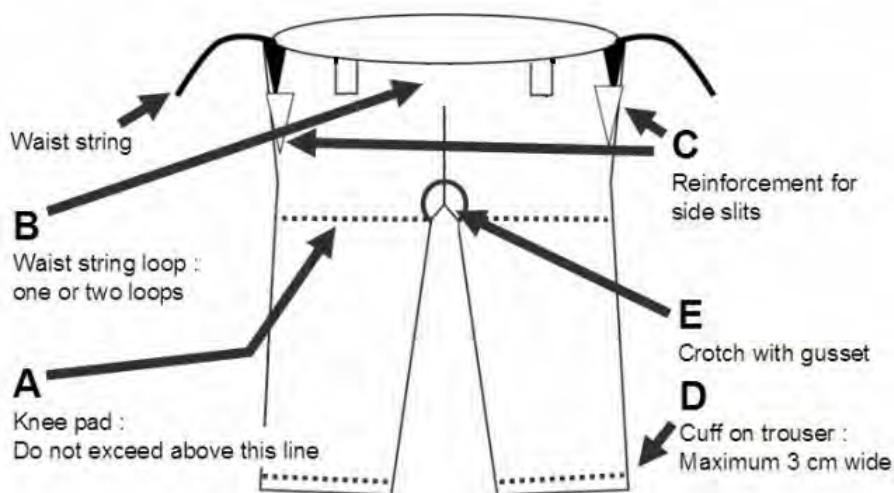
FIG. 13 THE HEIGHT OF THE SLIT ENDS (SIDE OF THE JACKET) HAS TO 1/3 TO 1/2 OF THE LOWER PART OF THE JACKET (FIG 11 PART A).



.2c(2) Trouser

- Knee pad on the fabric back must use only one layer of the same fabric as the trouser. Knee pad must be placed lower than crotch part. (Fig. 14, part A)
- The waist string must certainly be equipped. The material must be the same fabric as the trouser. Elastic material such as rubber, etc is not allowed for string. Number of string loop must be one or two. (Fig. 14, part B)
- Reinforcement lining fabric for each side slit (waist part) is allowed to be used with the same fabric as trouser. (Fig. 14, part C)
- A cuff on a trouser (turn-back of the leg edge) must be within 3 cm wide except raised part (except protuberances). Thin tape fabric within 3cm wide is allowed to be used for covering. (Fig. 14, part D)
- Gusset must be stitched onto the crotch part. (Fig. 14, part E)
- Overlock stitch for fabric raw edge is allowed to prevent fray.

FIG. 14 TROUSERS



2c(3) Belt

- The belt of Judogi must use 100 % cotton fabric (A), The manufacturers must not produce such a belt as to be easily knot-loosen or broken, which can cause disturbance of the match.
- Main core material must be non-woven fabric. (must not be elastic materials such as rubber.)
- Reinforcement fabric (B) must be as specified in Fig. 15 using plain or twill weave with cotton yarn count 20/1 or lower. Sub core (D) is allowed to use as shown in Fig.15. Sub core material (center of the belt cross-section) must be the same as reinforcement fabric (B).
- The belt must be 4 to 4.5 cm wide
- The belt must be sewn using at least 8-row but no more than 13-row of straight stitch.
- The thickness of the belt must be between 4 mm and 5 mm.

FIG. 15

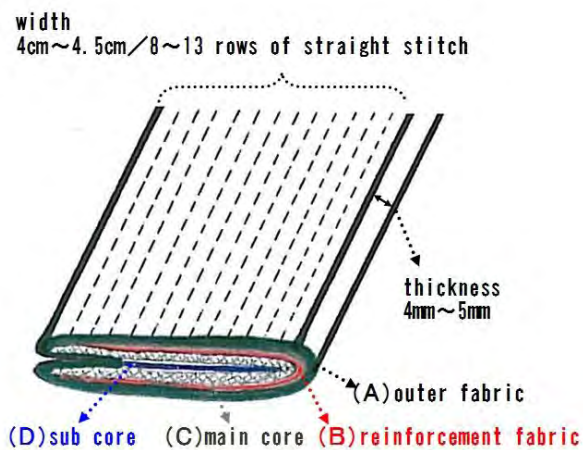


FIG 16



Note :(D) Sub core is optional.

FIG. 17



As shown in the above photo, belt should have the flexibility (softness). When pushing belt by hand from the both ends toward knot, the belt knot must not be loosening. Belt using too hard or slippery materials, which is easy to have knot loosening, is not allowed.



* For information of the back identification, any marking or advertisement on Judogi, and sizes to be measured for Judogi control, please refer to IJF Refereeing rule and IJF SOR.

3. POSITIONNING OF THE TAG

